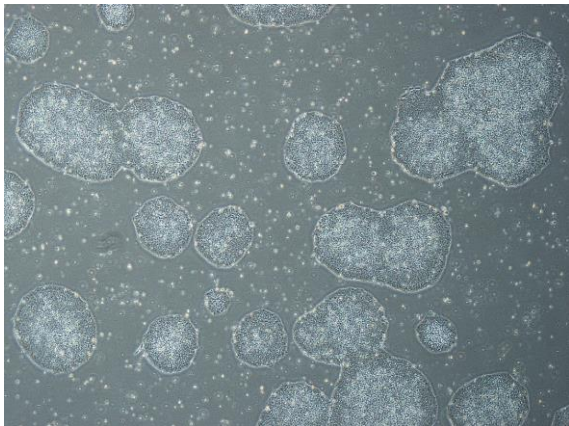
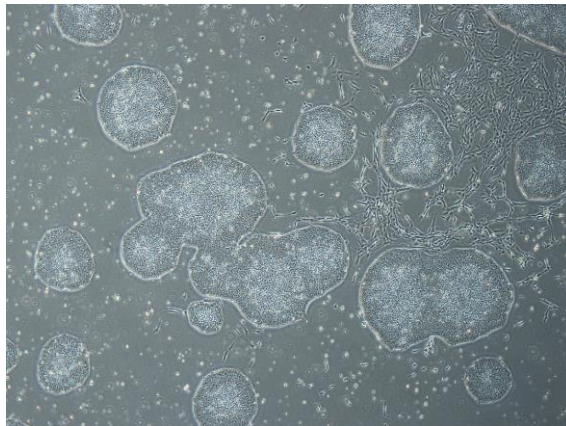


【 CiRA-j-1077 】 Morphology of iPSC colonies

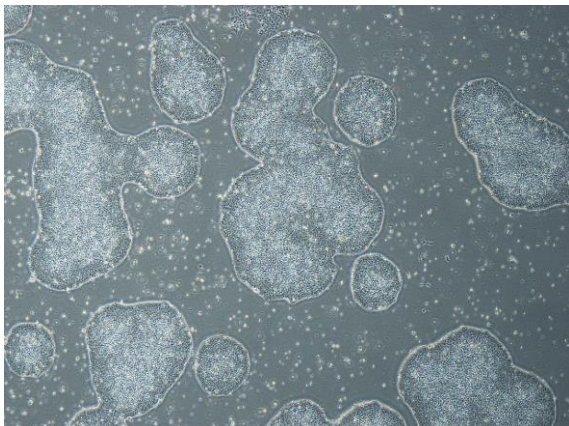
CiRA-j-1077-A: passage-3



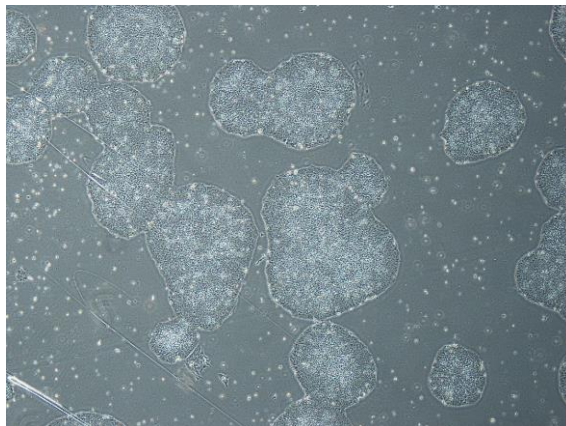
CiRA-j-1077-B: passage-3



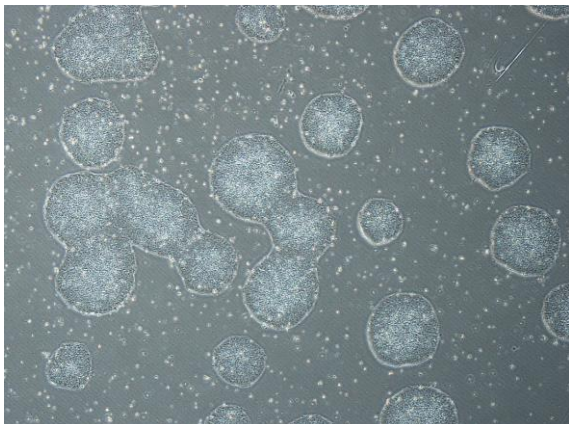
CiRA-j-1077-C: passage-3



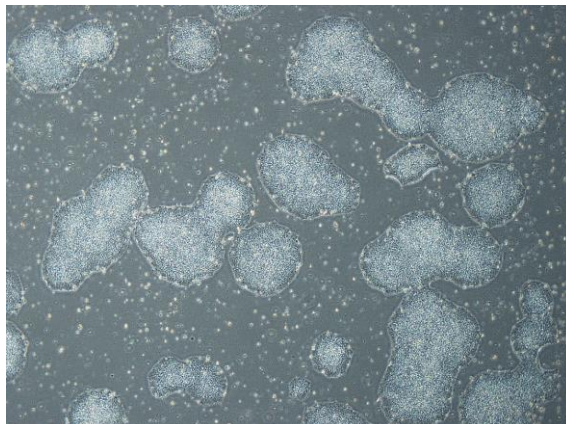
CiRA-j-1077-D: passage-3



CiRA-j-1077-E: passage-3



CiRA-j-1077-F: passage-3



(All images were captured at 4x magnification)